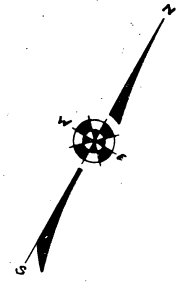
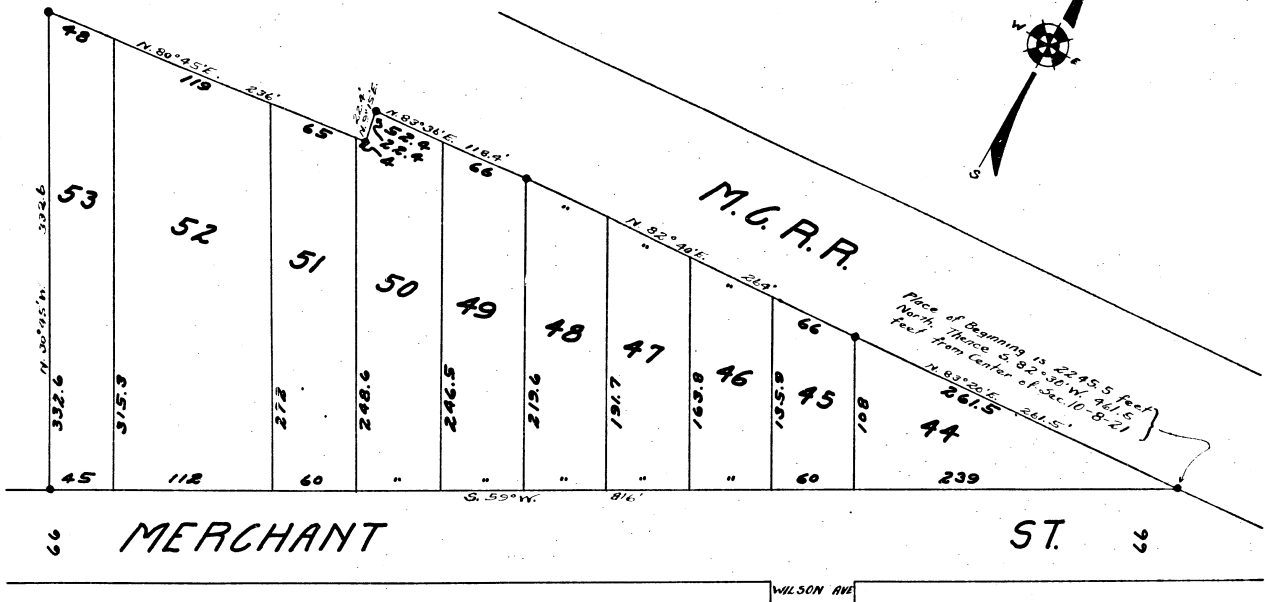


# CENTRAL ADDITION NUMBER ONE

TO THE  
VILLAGE OF NEW BUFFALO  
BERRIEN COUNTY  
MICHIGAN

Examined and Approved  
Feb 15 - 1926  
*J. P. Hauer*  
County Clerk



### DEDICATION.

KNOW ALL MEN BY THESE PRESENTS, That we, Olorich Stieber and Anna Stieber, his wife, as proprietors, have caused the land embraced in the annexed plat to be surveyed, laid out and platted, to be known as CENTRAL ADDITION NUMBER ONE to the VILLAGE OF NEW BUFFALO, BERRIEN COUNTY, MICHIGAN and that the streets and alleys as shown as said plat are hereby dedicated to the use of the public.

Signed and Sealed in Presence of  
*Anna Stieber* ..... A.S.  
*A. Martin Killejohn* ..... *Olorich Stieber* ..... A.S.  
*E. Bert Wear* .....

STATE OF MICHIGAN, )  
 County of Berrien, ) ss.  
 On this 20th day of October, 1925, before me, a Notary Public in and for said county, personally came the above named Anna Stieber and Olorich Stieber, known to me to be the persons who executed the above dedication, and acknowledged the same to be their free act and deed.  
*E. Bert Wear*  
 Notary Public, Berrien County, Michigan.

My Commission expires  
 Oct. 3 - 1928.

### DESCRIPTION.

The land embraced in the annexed plat of CENTRAL ADDITION NUMBER ONE to the VILLAGE OF NEW BUFFALO, BERRIEN COUNTY, MICHIGAN is described as follows: Commence at a point 2245.5 feet North of the center of Section 10, Township 8 South Range 21 West; Thence South 82°30'W. 461.5 feet to place of beginning of the land herein described; Thence S. 59° W. 816'; Thence N. 30° 45' W. 332.6'; Thence N. 80° 45' E. 338'; Thence N. 8° 15' E. 22.9'; Thence N. 83° 36' E. 118.4'; Thence N. 82° 40' E. 264'; Thence N. 83° 20' E. 261.5' to place of beginning.

Berrien  
 Central Addition 1191  
 Feb 15 1926  
 26 9  
 7  
*E. P. Baushke*  
 57

### SURVEYOR'S CERTIFICATE.

I hereby certify that the plat hereon delineated is a correct one and that permanent monuments of not less than one inch in diameter and fifteen inches in length set in a concrete base at least four inches in diameter and forty-eight inches in depth have been placed at points marked thus \* as thereon shown at all angles in the boundaries of the land platted, at all intersections of streets, intersections of alleys, or of streets and alleys, and at the intersections of streets and alleys with the boundaries of the plat as shown on said plat.

*J. H. Dewey*  
 Civil Engineer.

This plat was approved by the County Board of Examiners of Berrien County, Michigan on the 20th day of February, 1926

*William H. Andrews*  
 Judge of Probate.  
*W. P. Wagner*  
 County Clerk.  
*George Haid*  
 County Treasurer.

This plat was approved by the Village Council of the Village of New Buffalo, Berrien County, Michigan, at a meeting held on the 17th day of February, 1926

*Charles V. O'Connor*  
 Village Clerk.

### COUNTY TREASURER'S CERTIFICATE.

Office of County Treasurer, Berrien County, Mich.

I hereby certify that there are no tax liens or titles held by the State on the lands described below, and that there are no tax liens or titles held by individuals on said lands, for the five years preceding the 20th day of October, 1925 and that the taxes for said period of five years are paid, as shown by the records of this office.

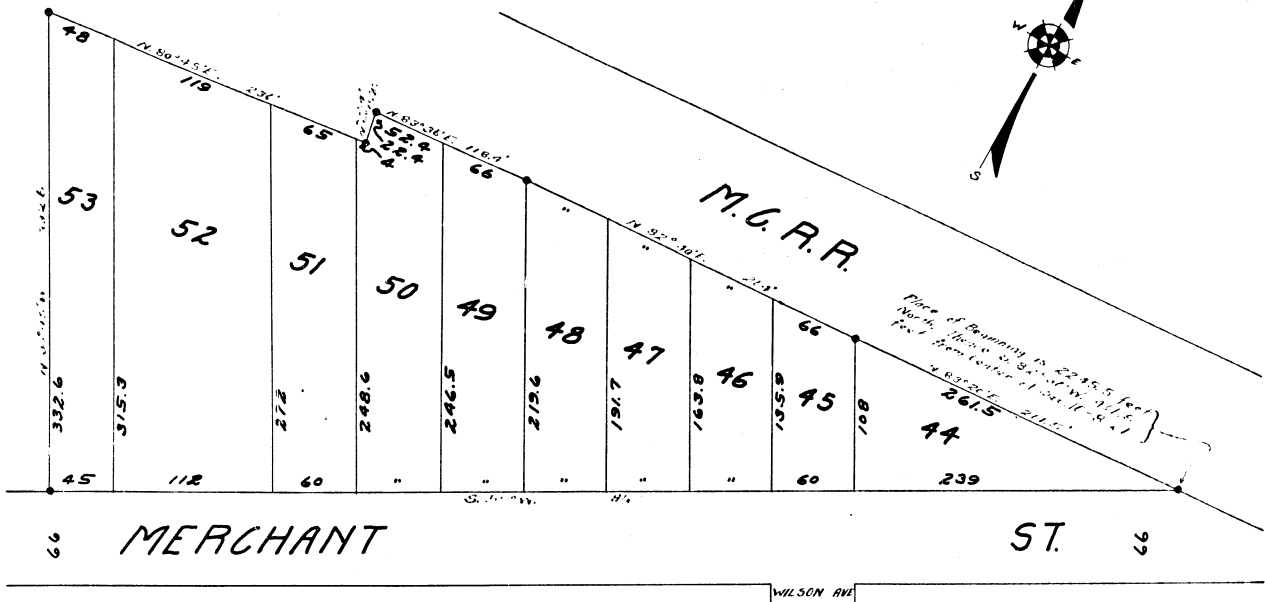
This certificate does not apply to taxes, if any, now in process of collection by township, city or village collecting officers.  
*George Haid*  
 County Treasurer.

FILED IN BERRIEN COUNTY  
 Feb 19 1926  
*J. P. Hauer*

# CENTRAL ADDITION NUMBER ONE

## TO THE VILLAGE OF NEW BUFFALO BERRIEN COUNTY MICHIGAN

Examined and approved  
July 15-1926  
J. L. Haines



SCALE 1 INCH = 60 FEET

### DEDICATION.

KNOW ALL MEN BY THESE PRESENTS, That we, Olerich Stieber and Anna Stieber, his wife, as proprietors, have caused the land embraced in the annexed plat to be surveyed, laid out and platted, to be known as CENTRAL ADDITION NUMBER ONE to the VILLAGE OF NEW BUFFALO, BERRIEN COUNTY, MICHIGAN and that the streets and alleys as shown as said plat are hereby dedicated to the use of the public.

Signed and Sealed in Presence of  
Anna Stieber..... A.S.  
A. Martin Kettle John..... Olerich Stieber..... A.S.  
E. Beal Wear.....

STATE OF MICHIGAN } ss.  
County of Berrien.

On this 20th day of October 1926 before me, a Notary Public in and for said county, personally came the above named Anna Stieber and Olerich Stieber, known to me to be the persons who executed the above dedication, and acknowledged the same to be their free act and deed.

E. Beal Wear.....  
Notary Public, Berrien County, Mich., U.S.

My Commission expires  
Oct. 3-1928.

### DESCRIPTION.

The land embraced in the annexed plat of CENTRAL ADDITION NUMBER ONE to the VILLAGE OF NEW BUFFALO, BERRIEN COUNTY, MICHIGAN is described as follows: Commence at the center of the East 2nd North of the center of Section 12 Township 6 North Range 01 West; Thence South 83°20'W. 142.51 feet to place of beginning of the land herein described; Thence S. 89° W. 61.0'; Thence N. 89° 45' W. 100.0'; Thence N. 88° 45' W. 100.0'; Thence N. 15° E. 22.5'; Thence N. 85° 36' W. 112.4'; Thence N. 83° 40' W. 100.4'; Thence N. 85° 32' W. 100.0' to place of beginning.

### COUNTY ENGINEER'S CERTIFICATE.

I hereby certify that the plat herein delineated is a correct one and that permanent monuments of not less than one inch in diameter and fifteen inches in length set in a concrete base at least four inches in diameter and four feet in length are set in the corners of the land platted, and that the intersections of streets, intersections of all ways or of streets and alleys, and all intersections of streets and alleys with the boundaries of the plat as shown on said plat.

J. H. Dewey.....  
Civil Engineer.

This plat was approved by the County Board of Berrien County, Michigan on the 8th day of February 1926.

William H. Andrews.....  
Judge of Probate.  
Geo. D. Wagner.....  
County Clerk.  
George Had.....  
County Treasurer.

This plat was approved by the Village Council of the Village of New Buffalo, Berrien County, Michigan, at a meeting held on the 7th day of February 1926.

Charles V. O'Conner.....  
Village Clerk.

### COUNTY TREASURER'S CERTIFICATE.

Office of County Treasurer, Berrien County, Mich.

I hereby certify that there are no tax liens or titles held by the State on the lands described below and that there are no tax liens or titles held by individuals on said lands, for the five years preceding the 1st day of October 1926 and that the taxes for said period of five years are paid, as shown by the records of this office.

This certificate does not apply to taxes, if any, now in process of collection by township, city or village collecting officers.

George Had.....  
County Treasurer.

Berrien  
Central Addition 1121  
July 18 9 1926  
Plot  
J. L. Haines

Examined and approved  
July 19-1926  
J. L. Haines