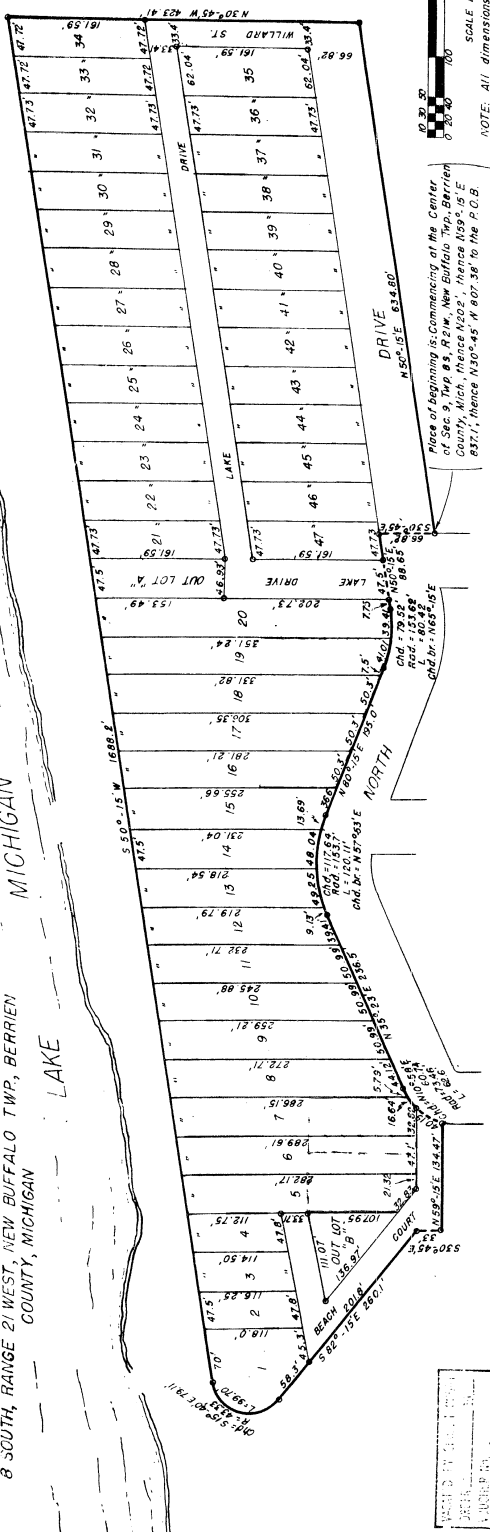


"SUNSET SHORES NO. 2"

VILLAGE OF NEW BUFFALO, BERRIEN COUNTY, MICHIGAN
BEING A SUBDIVISION OF PART OF SECTION 9, TOWNSHIP
8 SOUTH, RANGE 21 WEST, NEW BUFFALO TWP., BERRIEN
COUNTY, MICHIGAN

LAKE



DEDICATION

KNOW ALL MEN BY THESE PRESENTS, That we, The Berrien Home Builders, Inc., a Michigan corporation, by Peter M. Kerhulas, President, and Stephen T. Roumell, Secretary, as Proxies, have caused the plat hereon and plat to be surveyed, laid out and platted to be known as "SUNSET SHORES NO. 2", Village of New Buffalo, Berrien County, Michigan, being a subdivision of part of Section 9, Township 8 South, Range 21 West, New Buffalo Twp., Berrien County, Michigan, and that the streets and alleys as shown on said plat are hereby dedicated to the use of the public.

Berrien Home Builders, Inc.

Cecil W. Hahn President
Peter M. Kerhulas Secretary
Stephen T. Roumell

STATE OF MICHIGAN) ss
County of Berrien,)

On this 4th day of July 1952, before me, Cecil W. Hahn, a Notary Public in and for said county aforesaid, Stephen T. Roumell, to me personally known, who being each by me duly sworn did say that they are the President and Secretary respectively of The Berrien Home Builders Inc., a Michigan corporation, and that the seal affixed to said instrument is the corporate seal of said corporation and that said instrument was signed and sealed in behalf of said corporation by authority of its Board of Directors and the said Peter M. Kerhulas and Stephen T. Roumell, acknowledged said instrument to be the free act and deed of said corporation.

My commission expires June 30, 1953

Cecil W. Hahn
Notary Public, Berrien County, Michigan

CERTIFICATE OF APPROVAL BY COUNTY BOARD

This plat was approved on the 21st day of July, 1952, by the Berrien County Plat Board.
Frank X. Degan, Jr. County Clerk
Wm. H. Bantz County Treasurer

DESCRIPTION

The land embraced in the annexed plat of "SUNSET SHORES NO. 2", Village of New Buffalo, Berrien County, Michigan, being a subdivision of part of Section 9, Township 8 South, Range 21 West, New Buffalo Township, Berrien County, Michigan, is described as follows: Commencing at the center of Section 9, Township 8 South, Range 21 West, New Buffalo Township, Berrien County, Michigan, thence North 202 feet, thence N 59°-15' E 837.1 feet, thence N 30°-45' W 807.38 feet to the place of beginning, thence N 65°-15' E 634.8 feet, thence N 30°-45' W 423.41 feet, thence S 50°-15' W 1688.8 feet, thence around a 43.33 foot radius curve to the left (a chord distance of 515.40 E 79.11 feet), thence S 82°-15' E 260.1 feet, thence N 50°-15' E 134.47 feet, thence N 59°-15' E 134.47 feet, thence N 60°-54' E 60.54 feet, thence N 30°-23' E 236.5 feet, thence around a 153.7 foot radius curve to the right (a chord distance of 110.58 E distance of N 57°-53' E 117.64 feet), thence N 80°-15' E 195.0 feet, thence around a 155.62 foot radius curve to the left (a chord distance of N 57°-53' E 117.64 feet), thence N 50°-15' E 96.65 feet, thence S 30°-45' E 66.62 feet to the place of beginning.

TREASURER'S CERTIFICATE

Office of the County Treasurer, Berrien County, Michigan
 I hereby certify that there are no tax liens or titles held by the State on the land described hereon, and that there are no tax liens or titles held by individuals on said land for the five years preceding the date of this certificate, and the taxes for said period of five years are paid, as shown by the records of this office.
 This certificate does not apply to taxes, if any, now in the process of collection by township, city or village collection officers.

Wm. H. Bantz
County Treasurer

CERTIFICATE OF MUNICIPAL APPROVAL

This Plat was approved by the Village Board of the Village of New Buffalo, at a meeting held on July 7, 1952.

Russell F. Fudreck
Village Clerk

SURVEYOR'S CERTIFICATE

I hereby certify that the plat here on delineated is a correct one and that permanent metal monuments consisting of bars not less than one-half inch in diameter and 48 inches in length, or shorter bars of not less than one-half inch in diameter lapped over each other at least six inches with an over-all length of not less than 48 inches enclosed in a concrete cylinder at least 4 inches in diameter and 48 inches in depth have been placed at points marked thus "O" as thereon shown, at all angles in the boundaries of the land platted at all the intersections of streets, intersections of alleys, or of streets and alleys, and of the intersections of streets and alleys with the boundaries of the plat as shown on said plat.

G. L. Wightman
Registered Civil Engineer
5289

33214