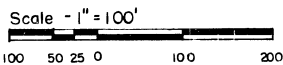
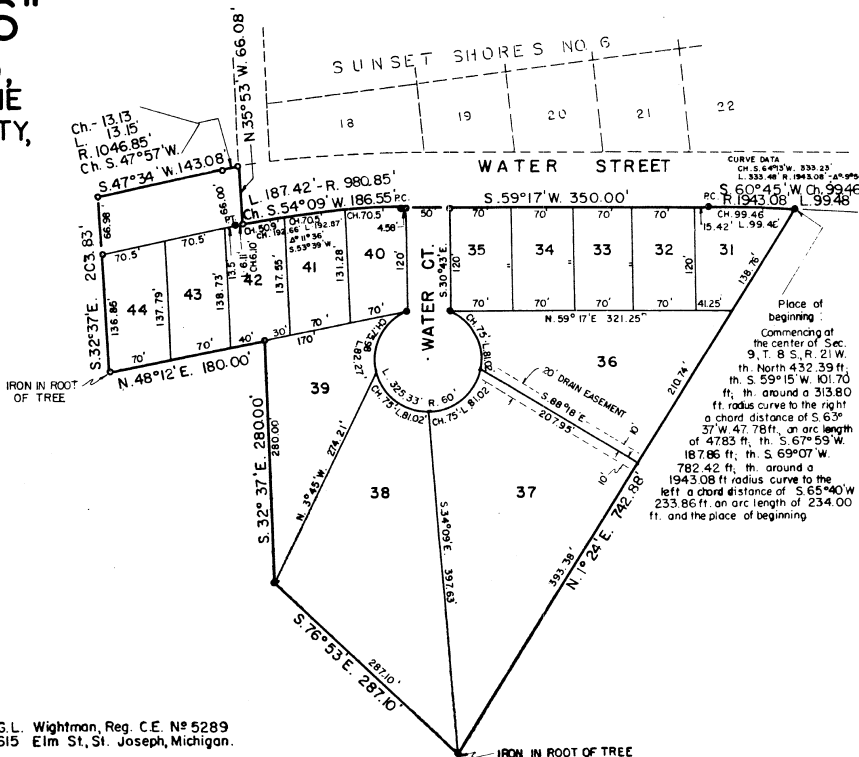
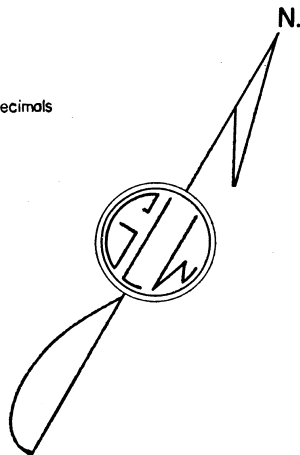


"SUNSET SHORES NO. 6"

BEING A SUBDIVISION IN PART OF SECTION 9, TOWNSHIP 8 SOUTH, RANGE 21 WEST, IN THE VILLAGE OF NEW BUFFALO, BERRIEN COUNTY, MICHIGAN.



NOTE: All dimensions are in feet or decimals thereof.



G.L. Wightman, Reg. C.E. No 5289
615 Elm St., St. Joseph, Michigan.

DEDICATION

KNOW ALL MEN BY THESE PRESENTS, That we, PETER M. KERHULAS and BERTHA KERHULAS, husband and wife, as proprietors, have caused the land embraced in the annexed plat, to be surveyed, laid out and platted, to be known as "SUNSET SHORES NO. 6," being a subdivision in part of Section 9, Township 8 South, Range 21 West, in the Village of New Buffalo, Berrien County, Michigan, and that the streets as shown on said plat are hereby dedicated to the use of the public.

Peter M. Kerhulas
PETER M. KERHULAS

Bertha Kerhulas
BERTHA KERHULAS

Signed and sealed in the presence of:

Elizabeth McNeill
ELIZABETH McNEILL

Marie Wain
MARIE WAIN

State of Michigan) ss
County of Berrien)

On this 5th day of September, 1962, before me, a Notary Public in and for said County, personally came the above named PETER M. KERHULAS and BERTHA KERHULAS, husband and wife, known to me to be the persons who executed the above dedication, and acknowledged the same to be their free act and deed.

My Commission expires: Oct. 17, 1965

Marie Wain
MARIE WAIN Notary Public, Berrien County, Michigan.

DESCRIPTION

The land embraced in the annexed plat of "SUNSET SHORES NO. 6," being a subdivision in part of Section 9, Township 8 South, Range 21 West, in the Village of New Buffalo, Berrien County, Michigan, is described as follows: Commencing at the center of Sec. 9, T. 8 S., R. 21 W.; th. North 432.39 feet, th. S. 59° 15' W. 101.70 ft., th. around a 313.80 ft. radius curve to the right a chord distance of S. 63° 37' W. 47.78 ft., an arc length of 47.83 ft., th. S. 67° 59' W. 187.86 ft.; th. S. 69° 07' W. 782.42 ft.; th. around a 1943.08 ft. radius curve to the left a chord distance of S. 65° 40' W. 233.86 ft., an arc length of 234.00 ft. and the place of beginning; th. around a 1943.08 ft. radius curve to the left a chord distance of S. 60° 45' W. 99.46 ft., an arc length of 99.48 ft.; th. S. 59° 17' W. 350.00 ft.; th. around a 980.85 ft. radius curve to the left a chord distance of S. 54° 09' W. 186.55 ft., an arc length of 187.42 ft., th. N. 35° 53' W. 66.08 ft.; th. around a 1046.85 ft. radius curve to the left a chord distance of S. 47° 57' W. 13.13 ft., an arc length of 13.15 ft.; th. S. 47° 34' W. 143.08 ft.; th. S. 32° 37' E. 203.83 ft.; th. N. 48° 12' E. 180.00 ft.; th. S. 32° 37' E. 280.00 ft.; th. S. 76° 53' E. 287.10 ft.; th. N. 1° 24' E. 742.88 ft., to the place of beginning. Containing 14 lots.

TREASURER'S CERTIFICATE

Office of County Treasurer, Berrien County, Michigan.
I hereby certify, that there are no tax liens or titles held by the State on the land described hereon, and that there are no tax liens or titles held by individuals on said lands for the five years preceding the 5th day of September, 1962, and that the taxes for said period of five years are paid, as shown by the records of this office.
This certificate does not apply to taxes, if any, now in the process of collection by the Township, City, or Village collecting office:s.

Wm. H. Bartz
Wm. H. BARTZ, County Treasurer.

CERTIFICATE OF MUNICIPAL APPROVAL

This plat was approved by the Village Board of the Village of New Buffalo at a meeting held on October 3, 1962; and that it is in compliance with Sec. 19a, and that the width of lots conforms with requirements of Sec. 30, Act 172, 1929, as amended.
Burnette C. Nichols
BURNETTE C. NICHOLS Village Clerk

CERTIFICATE OF APPROVAL BY COUNTY BOARD

This plat was approved on the 11th day of October, 1962, by the Berrien County Plat Board.
Beatrice Tiefenbach Frank X. Duerr Wm. H. Bartz Hazen D. Harner
Register of Deeds County Clerk County Treasurer Drain Commissioner

SURVEYOR'S CERTIFICATE

I hereby certify that the plat hereon delineated is a correct one and that permanent metal monuments consisting of bars not less than one-half inch diameter and 36 inches in length, or shorter bars of not less than one-half inch in diameter lapped over each other at least six inches with an overall length of not less than 36 inches, enclosed in a concrete cylinder at least 4 inches in diameter and 36 inches in depth have placed at points marked thus "O," as thereon shown at all angles in the boundaries of the land platted, at all the intersections of streets, intersections of alleys, or of streets and alleys, and at the intersections of streets and alleys with the boundaries of the plat as shown on said plat.

G.L. Wightman
G.L. WIGHTMAN, REG. C.E. No 5289

COPY
Recorder's Office }
Berrien County, } S.S.
Plat of
Sunset Shores No. 6
was recorded, this 26th day of
October, A.D. 1962, at 9:50 o'clock
A.M., in Liber 19 of Plats
on Page 7
Beatrice Tiefenbach
Recorder

Filed for recording
October 25, 1962
October 29, 1962
October 25, 1962

Richard E. Long